

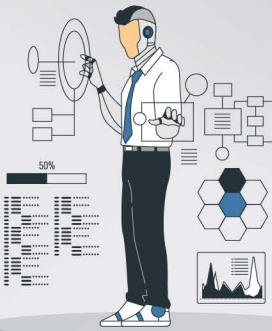
WAREHOUSE MANAGEMENT



STORE BILLING & INVENTORY



IOT & SMART SOLUTIONS



COURIER & LOGISTICS



TOLL & PARKING



HoReCa



Cloud Based MDM

- Location & Geo-fencing
- Device Management
- OTA App Update



- System Management
- App Store
- OTA System Update



IS 13252(PART 1)IEC 60950-1



R-71026824
www.bis.gov.in



SPECIFICATIONS - C7000

C7000	Mobile or Desktop Use 5.5-inch 18:9 Full View Display Multiple Communications Octa-core Processor Excellent Brand Scanning Engines (Zebra / Honeywell)
Processor	Qualcomm Octa-core; 64-bit processor, 2.0GHz
OS	Android 9 / Android 10 (optional)
Memory	2GB RAM + 16GB FLASH (optional 4GB RAM + 64GB FLASH), Upto 128GB Micro SD
Display	5.5-inch HD (1280x720) Ultra-wide Angle IPS Display, Corning Gorilla Glass
Keypad	5 Physical Keys (Power, Left Scan, Right Scan, Volume Up, Volume Down); On-screen Keypad
Camera	Rear: 13MP Autofocus with Flash Light; Front: 5MP Fixed Focus
NFC	ISO 14443 Type A and B; and ISO 15693 Cards
Card Slots	2 x SIM Card Slots
Barcode Scanning	Supports 1D Linear Scanner, 2D Image Scanner Supports Zebra SE47XO or Honeywell N6X03 Images (1D and 2D)
Communications	4G/3G/2G, Bluetooth v4.1 + BLE, 2.4GHz/5GHz dual band Wi-Fi
Audio	Built-in Speaker, Receiver, Microphone, Vibrator (optional)
Battery	Lithium Polymer Battery, 3.8V, 3000 mAh (optional 5000 mAh)
Adapter (Included)	Input: 100~400 AC 50/60 Hz; Output: 9.0V DC, 2.0A, Supports Quick Charge
Peripheral Ports	1 x USB Type C, 1 x Micro-SD
Certifications	BIS (R-71026824)
Charging Base (Optional Accessory)	1 x DC 3.5mm Port (POGO), 1 x LED Power Indicator
Holder (Optional Accessory)	- UHF ISO18000-6C Trigger Holder - upto 10 meters RFID Capture - Trigger Holder



SPECIFICATIONS - C7000 TRIGGER HOLDER

Dimensions	157.3 mm (L) * 80.8 mm (W) * 153.5 mm (T)
Weight	150 g
Operating / Storage Temp.	-10°C ~ 50°C / -20°C ~ 70°C
Relative Humidity	10% - 90% (Non-Condensing)
Colour	Black
Keypad	1x Scanning Key
External Interface	2x POGO Pins
LED Indicator	Yes



This document is provided to you for informational purposes only. All features and specifications are subject to change without notice. All other trademarks or brand names are the properties of their respective owners. Specifications are subject to modification / upgrades without notice.



Pine Tree Capital Markets Pvt Ltd
108 & 107, Centurion Business Park, S.G. Barve Marg,
Wagle Industrial Estate, Thane (W) - 400 604, MH, INDIA
www.pinetree.in | info@pinetree.in

IS 13252(PART 1)/IEC 60950-1

